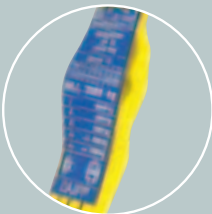


# 01

# LIFTING SLINGS



## ROUND SLINGS



**Lifting slings are used throughout in industry where lifting, moving and hanging of weights take place.**

- Made of 100% polyester [PES]
- Very high safety coefficient 7 to 1
- Manufactured according to european standards
- Woven protection sleeves assures high mechanical resistance
- Specifications of load capacity are marked on DAJPP original tag (by default) which is integral part of each lifting sling
- Our slings are supplied with certification and directions for use

**Advantages of DAJPP's lifting slings in use:**

- considerateness to weight surface
- softness, flexibility
- insulative ability
- relatively light weight comparing to load capacity
- easy manipulation
- long working life if used correctly
- doesn't require use of work protections such as gloves
- easy maintenance and cleaning with common detergents
- tensile strength up to 5%



**Practical application:**



- lifting slings are resistant to most mineral acids, not resistant to alkalis



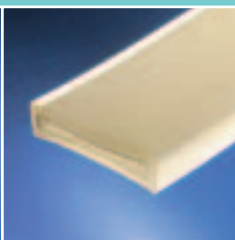
- suitable for storage and use in temperature range from **-40°C to +100°C** [range may vary in environments where chemicals are present]. When used in low temperatures ice may appear. Ice can act as cutting and abrasive instrument which can cause internal damage to the sling. Ice is also reducing sling flexibility and in extreme case making sling unusable.



- lifting slings are made of synthetic fiber which is sensitive to UV radiation. This is the reason why slings have to be stored away from direct sunlight and sources of UV radiation, if possible.

**Protective means:**

- **Considerably prolong working life of textile slings**
- **PVC sleeves** as protection against grease, soil and abrasion
- **Polyurethane sleeves and corners** as protection against sharp edges



**DP**



**JP**



**JPK**

# DP

## ROUNDSLINGS 100% PES - ENDLESS

**Standard device for lifting applications  
- Considerate to all weights.**

**use:** building construction, extreme heavy weight lifting [50 t and more]



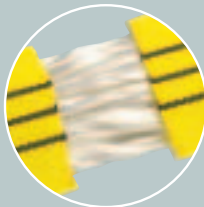
manufactured according to CSN EN 1492-2

we manufacture slings with load capacity from 1000 kg to 33000 kg and with nominal lengths from 0.5 m to 20 m graded by 0.5 m

specifications of load capacity are marked on **DAJPP original tag** which is integral part of each lifting sling. Each stripe on protective sleeve represents 1000 kg - up to 10000k g.

**slings are seamless and correspond to European standards**

we are able to manufacture slings with nonstandard nominal lengths and load capacities to customer's request



**woven protection sleeves assures high mechanical resistance**



# Our reference: **DP999888**

Explanation:

- DP** – roundsling, 100% PES - endless
- 999** – load capacity [q = 100 kg]
- 888** – nominal length  $L_1$  [dm = 0,1 m]

Ordering example:

**DP030050** ..... 1 pc

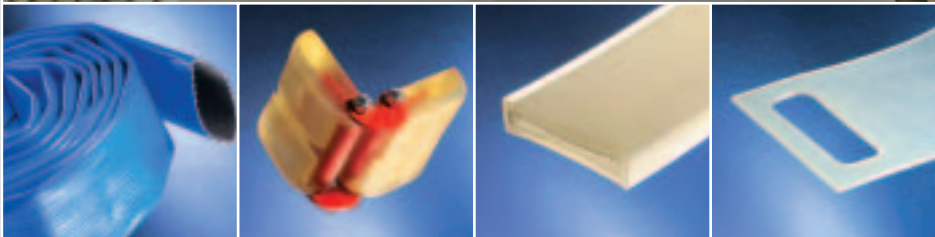
Above means:

We order 1 pc of roundsling, 100% PES, endless, load capacity 3000 kg, nominal length 5 m.

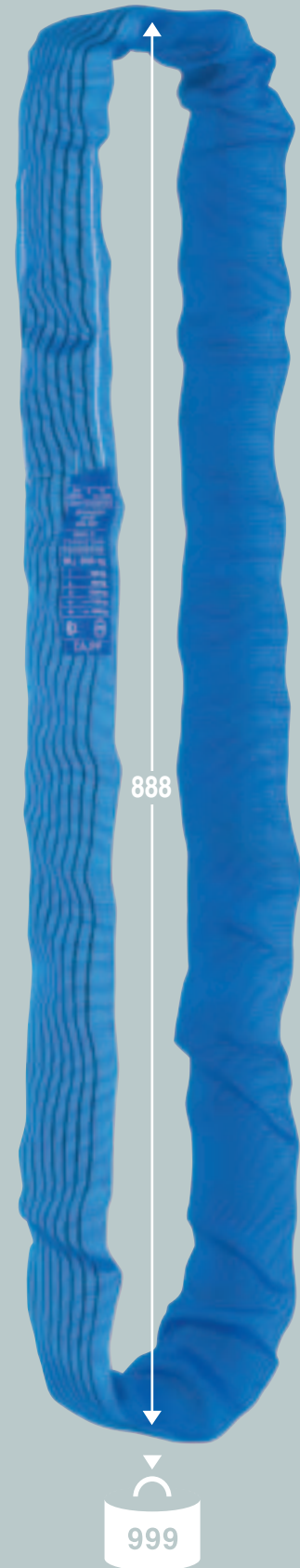
## Technical data: **DP**

Reference	Sling color	Load capacities in kg					Protective sleeves type 3, 4	
		straight lift	lift in choke	Under weight lift			PVC sleeves	PU sleeves [polyurethane]
				straight	$\beta = 0^\circ - 45^\circ$	$\beta = 45^\circ - 60^\circ$		
		M = 1	M = 0,8	M = 2	M = 1,4	M = 1		
<b>DP010...</b>	violet	1000	800	2000	1400	1000	PVC050	PU[1/2/2D]050
<b>DP020...</b>	green	2000	1600	4000	2800	2000	PVC060	PU[1/2/2D]060
<b>DP030...</b>	yellow	3000	2400	6000	4200	3000	PVC070	PU[1/2/2D]080
<b>DP040...</b>	grey	4000	3200	8000	5600	4000	PVC080	PU[1/2/2D]110
<b>DP050...</b>	red	5000	4000	10000	7000	5000	PVC100	PU[1/2/2D]110
<b>DP060...</b>	brown	6000	4800	12000	8400	6000	PVC120	PU[1/2/2D]110
<b>DP080...</b>	blue	8000	6400	16000	11200	8000	PVC120	PU[1/2/2D]145
<b>DP100...</b>	orange	10000	8000	20000	14000	10000	PVC120	PU[1/2/2D]145
<b>DP120...</b>	orange	12000	9600	24000	16800	12000	PVC160	PU[1/2/2D]170
<b>DP150...</b>	orange	15000	12000	30000	21000	15000	PVC160	PU[1/2/2D]170
<b>DP160...</b>	orange	16000	12800	32000	22400	16000	PVC160	PU[1/2/2D]170
<b>DP200...</b>	orange	20000	16000	40000	28000	20000	PVC240	PU[1/2/2D]200
<b>DP250...</b>	orange	25000	20000	50000	35000	25000	PVC240	PU[1/2/2D]290
<b>DP300...</b>	orange	30000	24000	60000	42000	30000	PVC320	PU[1/2/2D]330
<b>DP330...</b>	orange	33000	26400	66000	46200	33000	PVC320	PU[1/2/2D]330

M = coefficient for symmetric weight. Angle  $\beta$  up to  $6^\circ$  is considered as straight lift



You can considerably increase working life of lifting slings by using protective means. Our product range include highly resistant PVC and polyurethane sleeves for protection against abrasive and sharp edges [see protective means chapter].



# JP

## ROUNDSLINGS 100% PES - WITH TEXTILE EYES

**Standard device for general lifting applications  
- considerate to all weights.**

**use:** lifting slings with eye-eye make are great substitution for wire rope sling or textile rope sling



manufactured according to CSN EN 1492-2

we manufacture slings with load capacity from 1000 kg to 15000 kg and with nominal lengths from 1 m to 20 m graded by 0.5 m

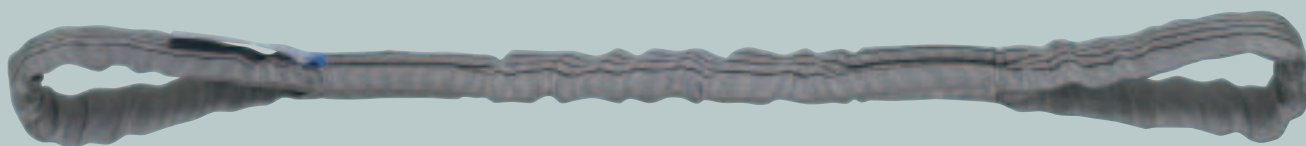
specifications of load capacity are marked on **DAJPP original tag** which is integral part of each lifting sling. Each stripe on protective sleeve represents 1000 kg - up to 10000 kg

**slings are seamless and correspond to European standards**

we are able to manufacture slings with nonstandard nominal lengths and load capacities to customer's request



**woven protection sleeves assures high mechanical resistance**



# Our reference: **JP999888**

## Explanation:

- JP** – roundsling, 100% PES - with textile eyes
- 999** – load capacity [q = 100 kg]
- 888** – nominal length  $L_1$  [dm = 0,1 m]

## Ordering example:

**JP030050** ..... 1 pc

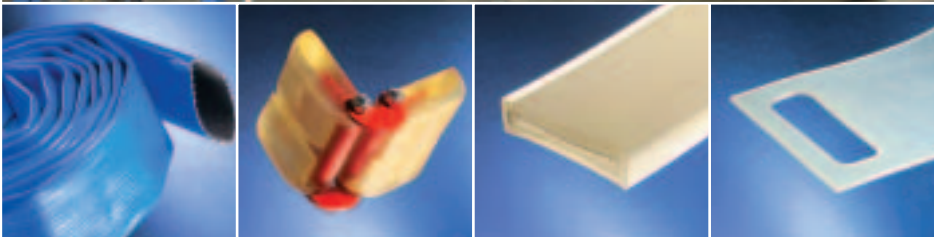
## Above means:

We order 1 pc of roundsling, 100% PES, with textile eyes, load capacity 3000 kg nominal length 5 m.

## Technical data: **JP**

Reference	Sling color	Load capacities in kg					Protective sleeves	
		straight lift	lift in choke	Under weight lift			PVC sleeves	PU sleeves [polyurethane]
				straight	$\beta = 0^\circ - 45^\circ$	$\beta = 45^\circ - 60^\circ$		
		M = 1	M = 0,8	M = 2	M = 1,4	M = 1		
<b>JP010...</b>	violet	1000	800	2000	1400	1000	PVC060	PU[1/2/2D]050
<b>JP020...</b>	green	2000	1600	4000	2800	2000	PVC070	PU[1/2/2D]060
<b>JP030...</b>	yellow	3000	2400	6000	4200	3000	PVC080	PU[1/2/2D]080
<b>JP040...</b>	gray	4000	3200	8000	5600	4000	PVC100	PU[1/2/2D]110
<b>JP050...</b>	red	5000	4000	10000	7000	5000	PVC120	PU[1/2/2D]110
<b>JP060...</b>	brown	6000	4800	12000	8400	6000	PVC120	PU[1/2/2D]110
<b>JP080...</b>	blue	8000	6400	16000	11200	8000	PVC120	PU[1/2/2D]110
<b>JP100...</b>	orange	10000	8000	20000	14000	10000	PVC160	PU[1/2/2D]145
<b>JP120...</b>	orange	12000	9600	24000	16800	12000	PVC160	PU[1/2/2D]145
<b>JP150...</b>	orange	15000	12000	30000	21000	15000	PVC160	PU[1/2/2D]170

M = coefficient for symmetric weight. Angle  $\beta$  up to  $6^\circ$  is considered as straight lift



You can considerably increase working life of lifting slings by using protective means. Our product range include highly resistant PVC and polyurethane sleeves for protection against abrasive and sharp edges [see protective means chapter].



# JPK

## MULTIPLE LEG LIFTING SLINGS

- COMBINED OF JP ROUNDSLINGS AND GRADE 8 METAL COMPONENTS

**Standard device for general lifting applications  
- considerate to all weights.**

**use:** building construction, lifting of heavy weight with more load-bearing points [machinery, pressing form]



manufactured according to **CSN EN 1492-2**

we manufacture one-leg to four-leg slings with load capacity of single leg from 1000 kg to 5000 kg and with nominal lengths from 1 m to 10 m graded by 0.5 m

Specifications of load capacities are marked on **metal tag** which is integral part of each multiple leg lifting sling

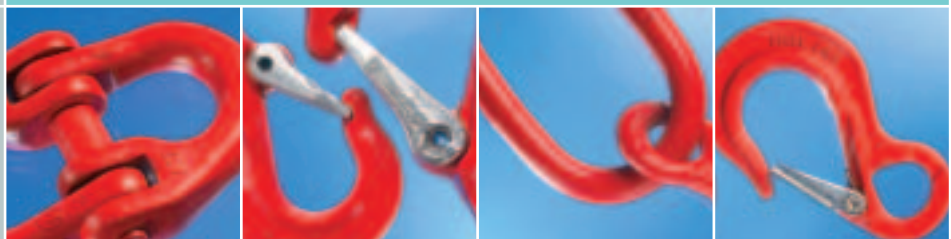
**slings correspond to European standards**

we are able to manufacture slings with more legs, nonstandard nominal lengths and load capacities to customer's request

we are able to adapt metal components to customer's request for nonstandard components [i.e. hooks, master links . . . ]



**woven protection sleeves and high quality grade 8 components assures high mechanical resistance and quality of multiple leg lifting slings.**



## Our reference: **JPK9998887**

### Explanation:

**JPK** – multiple leg lifting sling combined of JP roundslings and grade 8 metal components

**999** – single leg load capacity [q = 100 kg]

**888** – nominal length  $L_1$  [dm = 0,1 m]

**7** – number of legs of lifting sling [1 to 4]

### Ordering example:

**JPK0500204** ..... 1 pc

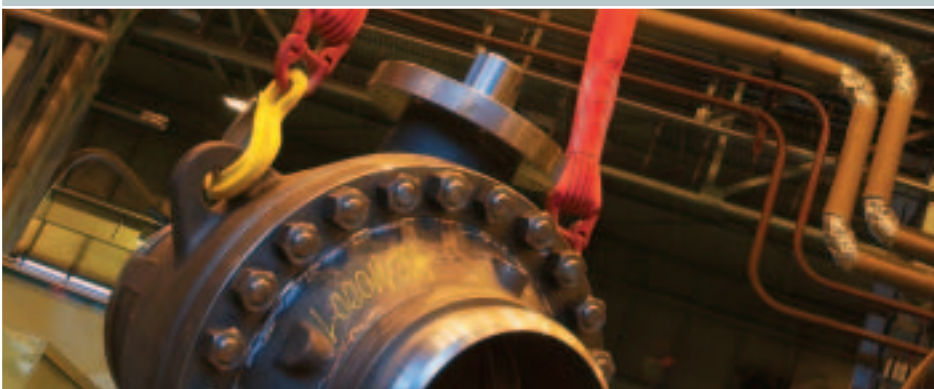
### Above means:

we order 1 pc of multiple leg lifting sling combined of JP roundslings and grade 8 metal components, single leg load capacity 5000 kg, nominal length 2 m

## Technical data: **JPK**

Reference	Sling color	Informative sling width [mm]	Single leg load capacity	Load capacities in kg					Protective sleeves	
				straight lift	two legs		three and four legs		PVC sleeves	PU sleeves [polyurethane]
					$\beta = 0^\circ - 45^\circ$	$\beta = 45^\circ - 60^\circ$	$\beta = 0^\circ - 45^\circ$	$\beta = 45^\circ - 60^\circ$		
				M = 1	M = 1,4	M = 1	M = 2,1	M = 1,5		
<b>JPK010....</b>	violet	30	1000	1000	1400	1000	2100	1500	PVC060	PU[1/2/2D]050
<b>JPK020....</b>	green	35	2000	2000	2800	2000	4200	3000	PVC070	PU[1/2/2D]060
<b>JPK030....</b>	yellow	45	3000	3000	4200	3000	6300	4500	PVC080	PU[1/2/2D]080
<b>JPK040....</b>	grey	52	4000	4000	5600	4000	8400	6000	PVC100	PU[1/2/2D]110
<b>JPK050....</b>	red	60	5000	5000	7000	5000	10500	7500	PVC120	PU[1/2/2D]110

M = coefficient for symetric weight. Angle  $\beta$  up to  $6^\circ$  is considered as straight lift



You can considerably increase working life of lifting slings by using protective means. Our product range include highly resistant PVC and polyurethane sleeves for protection against abrasive and sharp edges [see protective means chapter].

